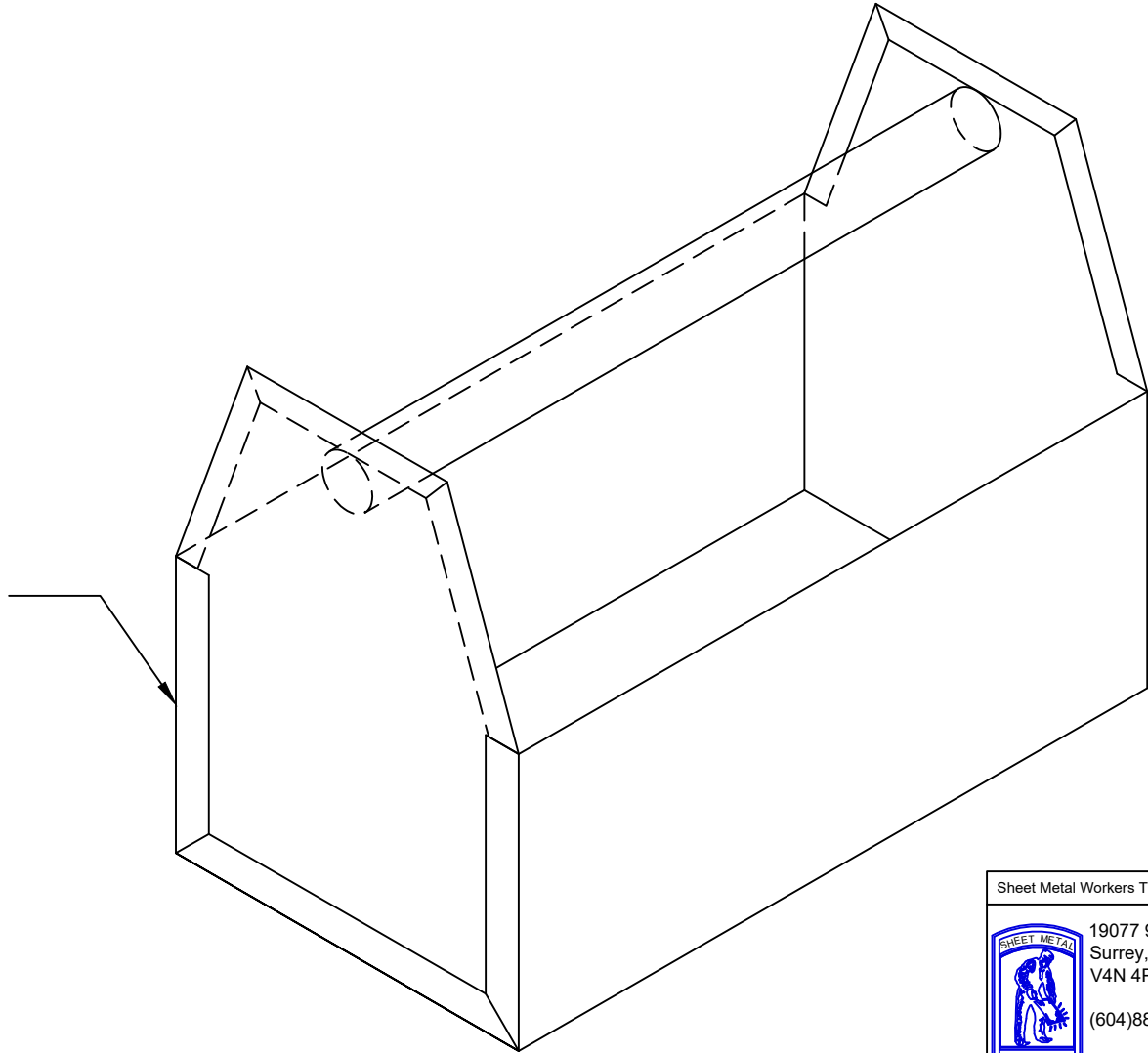


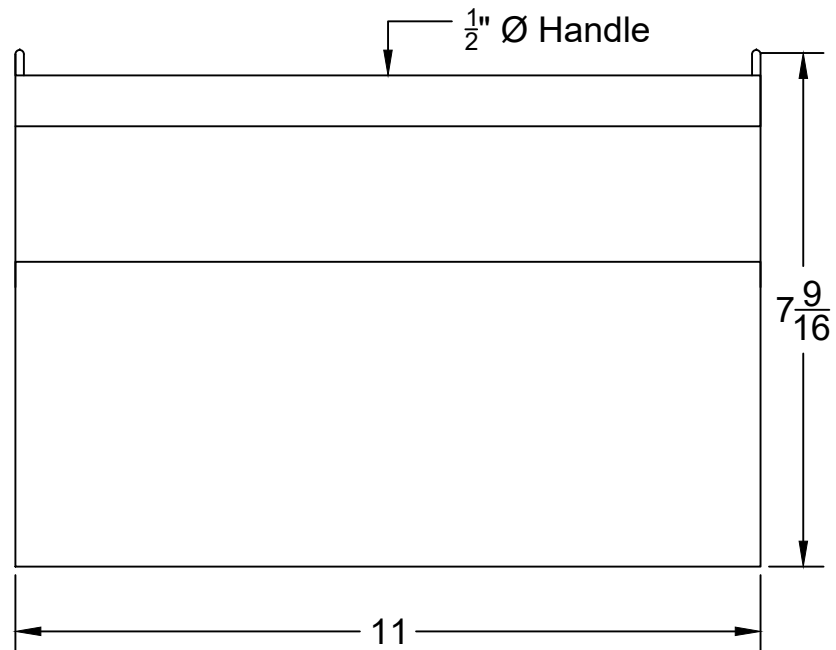
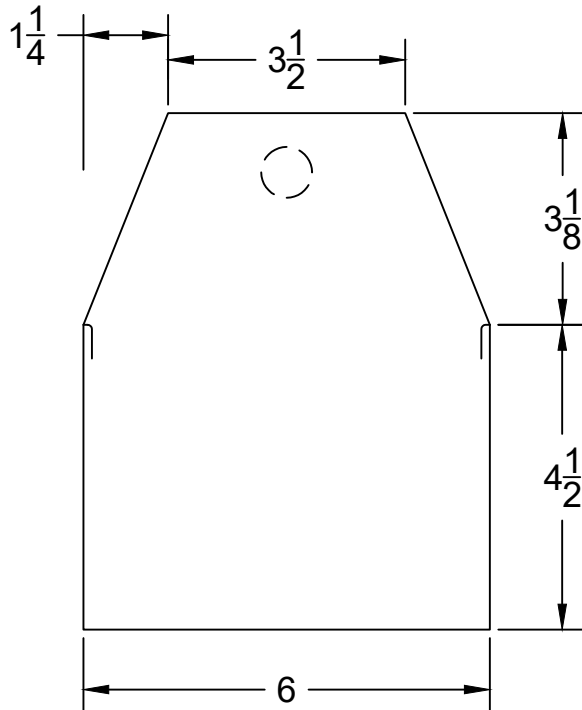
Lap and
Spot Weld
or Rivet Seam



Sheet Metal Workers Training Centre



19077 95A Ave.
Surrey, B.C.
V4N 4P3
(604)882-7680
www.smwtc.ca

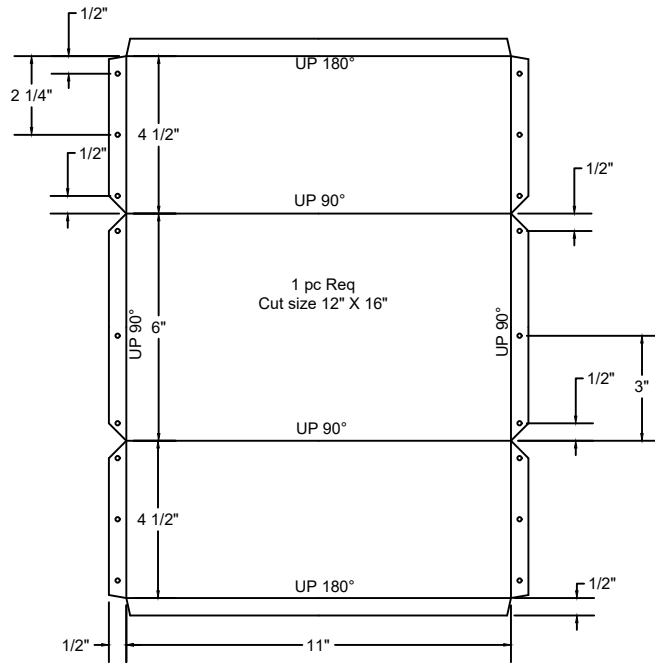


24 ga Galv "Carry Some"
 Spot Weld Seams
 Tube Handle
 All Sizes Nominal

Sheet Metal Workers Training Centre

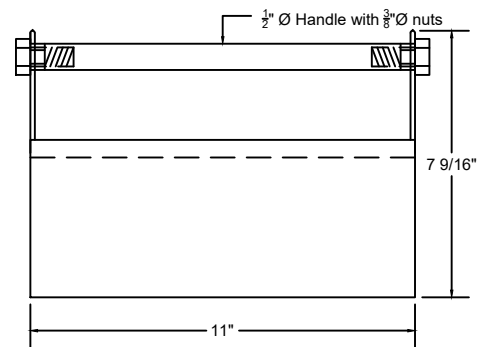
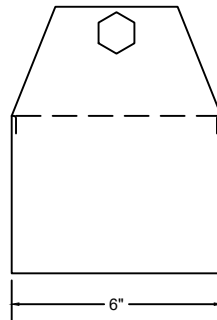
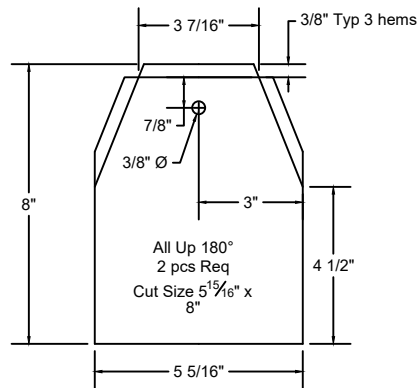
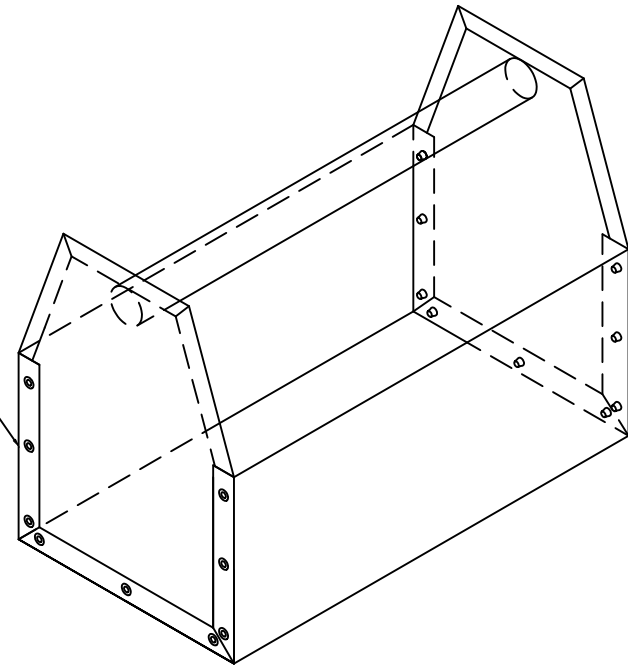


19077 95A Ave.
 Surrey, B.C.
 V4N 4P3
 (604)882-7680
 www.smwtdcs.ca



Material List	
24-26GA Galvanized Steel -	
1 Piece @ 12" x 16"	
2 Pieces @ 5 15/16" x 8"	
1/2" Ø EMT (Conduit) - 1 Piece @ 10 7/8"	
2- 1" x 3/8" Ø Hex Head Bolts w/ Nuts	
18 - 3/8" Ø x 3/8" Grip, Steel Pop Rivets	

Lap and Rivet Seam



Sheet Metal Workers Training Centre



19077 95A Ave.
Surrey, B.C.
V4N 4P3

(604)882-7680

www.smwtc.ca

